

# Office to let

## HBC Pallady

Bucharest, Sector 3, 47 Theodor Pallady Blvd.



### Building information

Building status	Existing
Year of construction	2014
Parking ratio	1 / 70 sq m
Total building area	8 000 sq m

### Commercial terms

Office space*	after login *
Parking	after login *
Service charge*	after login *
Minimum lease term	after login *
Availability	after login *

\* Asking terms for m<sup>2</sup>/month

### Location



### Available space

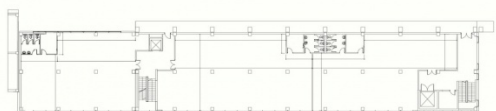
*3 230 sq m*

Available office space

*223 sq m*

Minimum office space

## Typical floor plan



## Available space

Floor	Vacant space	Availability
0	please contact us *	please contact us *
1	please contact us *	please contact us *
1	please contact us *	please contact us *
2	please contact us *	please contact us *
Total	after login *	

## Public transport

Metro: M3

Tram: 19, 27, 40

Contact



+40 21 302 3400

More information